

Leonardo

C-MINE

(28)

C-Mine is a concrete look that incorporates graphic details from stone, metal and brick, creating an appealing product that goes beyond a purely industrial look. The variation and movement make it an attractive option for both residential and commercial projects.



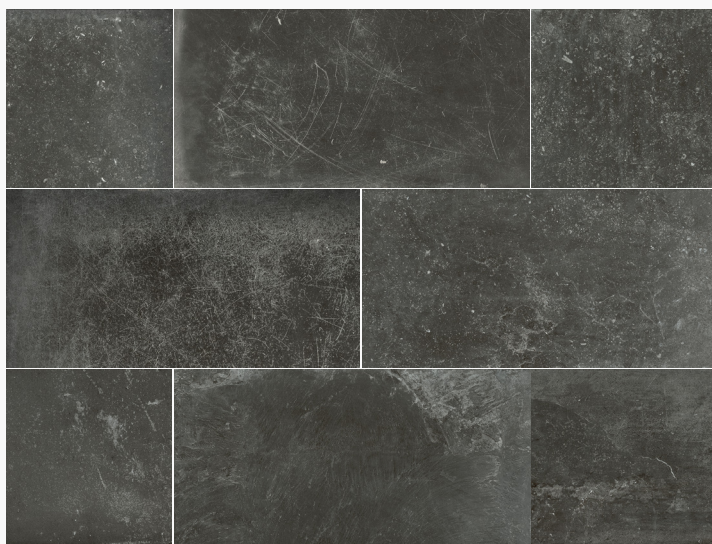
Grey/Beige (LOCMGB)



Argento Grey (LOCMAG)



Grigio (LOCMGO)



Nero (LOCMNO)

Colors are intended as a guide only and may vary from actual tile. Sizes listed are nominal. Please check samples before making final selection and to get actual dimensions for layout. See reverse side for additional product information.

Product Information

Colors

Argento Grey (Light Grey) (LOCMAG) Grey/Beige (LOCMGB)
Grigio (Medium Grey) (LOCMGO) Nero (LOCMNO)

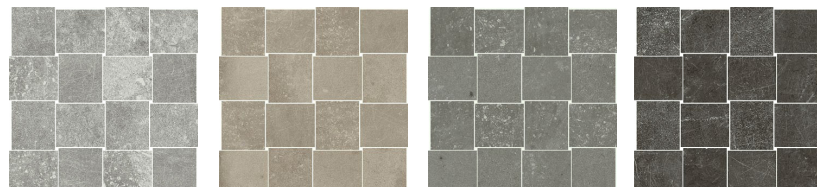
Size (Natural Finish) - R10 A, Rectified

12 x 24 LOCM-/1224

Mosaic

Intreccio Mosaic

LOCM-/IM



LOCMAG/IM

LOCMGB/IM

LOCMGO/IM

LOCMNO/IM

Trim

The surface bullnose is made from field tile that is cut, ground and re-glazed.

LOCM-/SBN 2-1/2 x 24 Surface Bullnose



Usage & Installation Information

C-Mine is suitable for residential to moderate commercial applications.

As with all inkjet products, there are many different graphics that are mixed and packed randomly. It is important to pull from multiple boxes during installation, rotate pieces, and note the placement of the different images to get the proper final blend.

Most Italian manufacturers recommend a maximum offset of 8" (20cm) on all large format tiles when setting a running bond. Please refer to ANSI requirements for setting large format tiles ANSI A 108.2 Section 4.3.8.

Technical Information

Physical Properties	Norms	Value
Deep Abrasion Resistance	10545-6	<175mm ³ Conforms
Water Absorption	10545-3	≤0.5% Conforms
Frost Resistance	10545-12	Resistant
Slip Resistance	DIN51130	R10 A
Dynamic (DCOF) Coefficient of Friction	DCOF	≥ 0.42 Wet

The Coefficient of Friction is a general guide only. Testing may vary with different production runs and with different testing labs. As noted in the American with Disabilities Act (ADA) the coefficient of friction varies considerably due to facts not under the control of entities such as the manufacturers and distributors. These factors include, but are not limited to, contaminants, slope of terrain, drainage conditions, adjacent surfaces, etc. Suitability for any installation can only be determined by a site examination of all conditions that could affect the slip resistance of the tile being installed. Continual cleaning and maintenance must be performed once the tile has been installed.

Non-Stock Sizes

Available in all stocked colors

Natural (Matte) - Rectified	Bush-Hammered (R11 B) - Rectified
24 x 24 LOCM-/2424	—
24 x 48 LOCM-/2448	24 x 48 LOCM-B/2448
48 x 48 LOCM-/4848	—
18 x 36 LOCM-/1836	—
38 x 38 LOCM-/3636	—
Natural (Matte) - Non-Rectified	
18 x 18 LOCM-/1818	